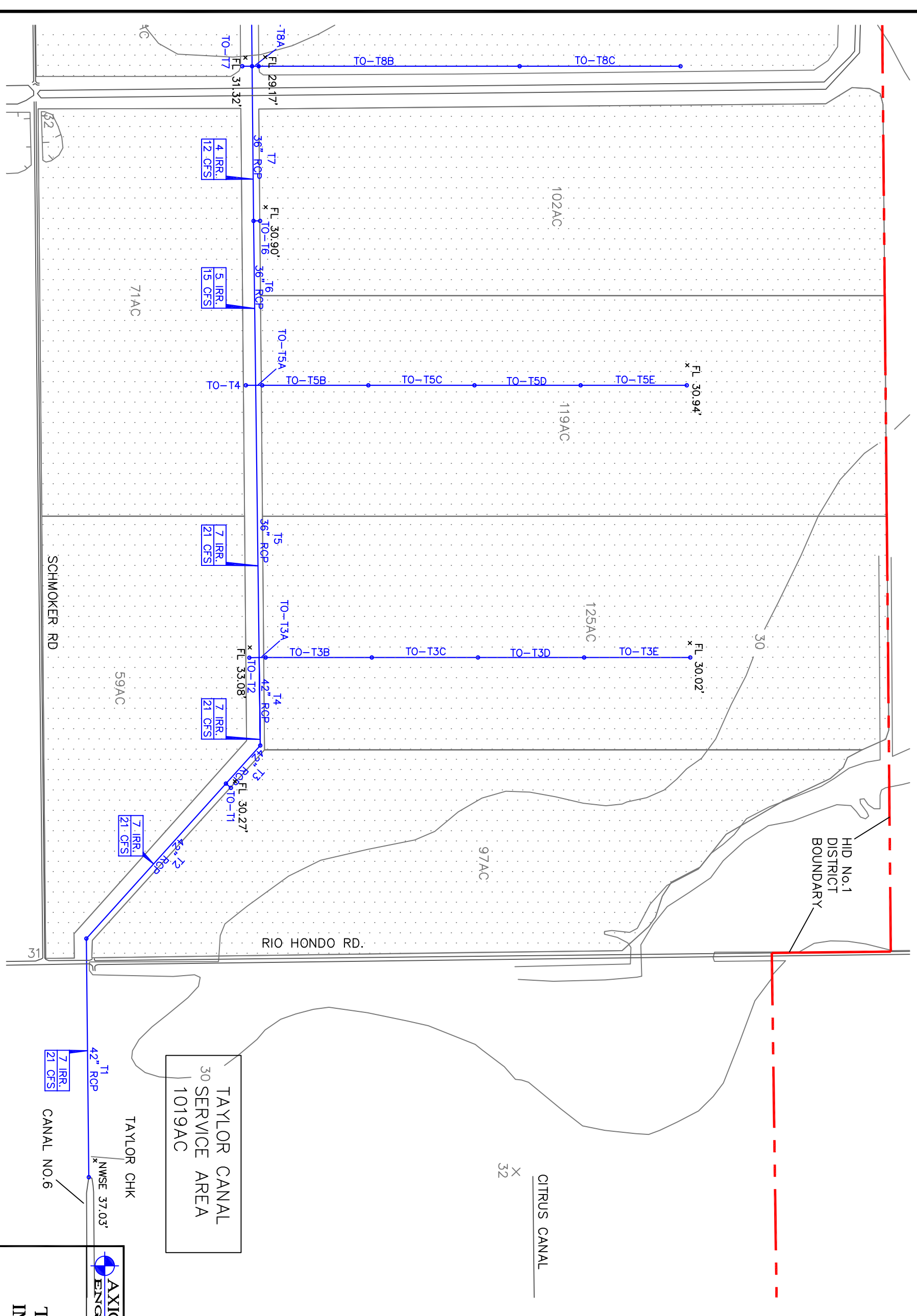




LEGEND

- TAYLOR TURNOUTS
- SERVICE TO-T1 AREA THROUGH 1019AC TO-T11
- DESIGN CAPACITY
- 5 IRR. 15 CFS
- FLOW DIRECTION
- FL 30.2' GPS ELEV.



TAYLOR CANAL
30
SERVICE AREA
1019AC



AXIOM-BLAIR
ENGINEERING

H.I.D. NO.1
TAYLOR CANAL
IMPROVEMENTS

JOB NO.: 169
JAN 2002

EXHIBIT C-1